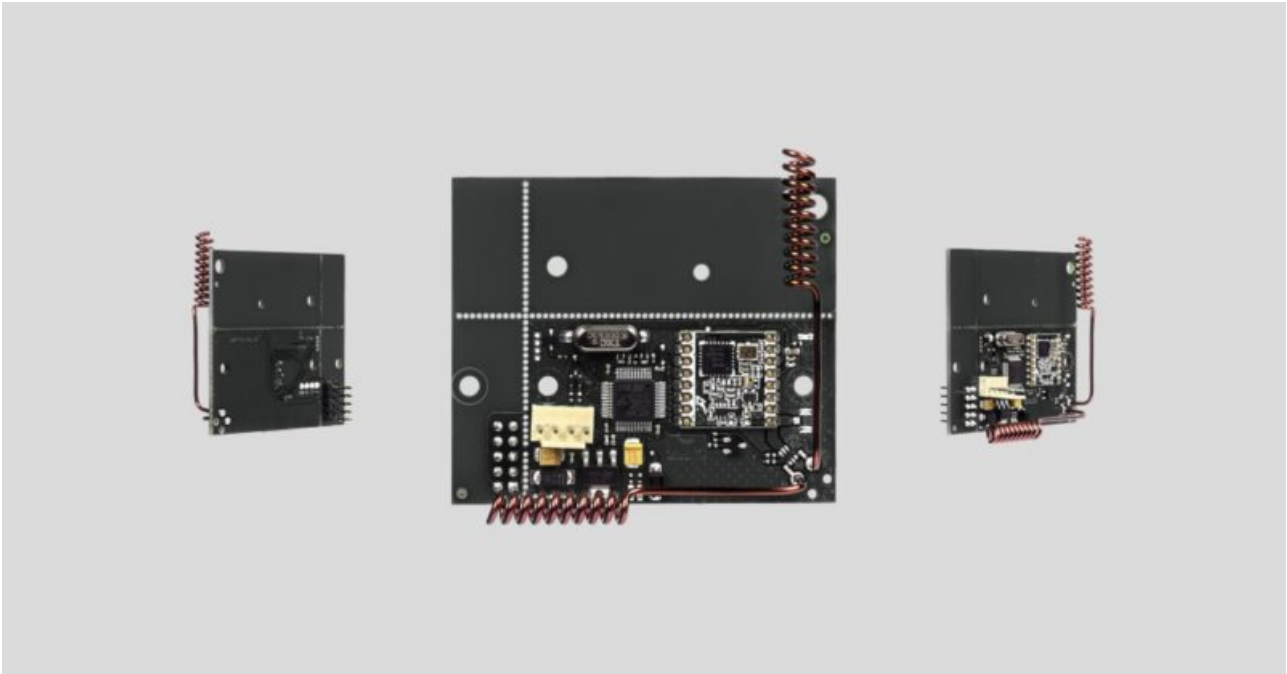


uartBridge user manual

Updated February 16, 2021



uartBridge – is the module for integration with third-party wireless security and smart home systems.

A wireless network of smart and secure Ajax detectors can be added to a third-party security or smart home system through the UART interface.



Connection to [Ajax hubs](#) is not supported.

[Buy uartBridge](#)

Supported sensors:

- [MotionProtect](#) ([MotionProtect Plus](#))
- [DoorProtect](#)

- [SpaceControl](#)
- [GlassProtect](#)
- [CombiProtect](#)
- [FireProtect \(FireProtect Plus\)](#)
- [LeaksProtect](#)

Integration with third-party detectors is implemented at protocol level.

uartBridge communication protocol

Tech specs

Communication interface with central unit	UART (speed 57,600 Bd)
Use	Indoor
Radio signal power	25 mW
Communication protocol	Jeweller (868.0–868.6 MHz)
The maximum distance between a wireless detector and uartBridge receiver	Up to 2,000 m (in open area)
Maximum number of connected devices	85
Detection of jamming	Yes
Software update	Yes
Detector performance monitoring	Yes
Power supply voltage	DC 5 V (from the UART interface)
Operating temperature range	From -10°C to +40°C
Operating humidity	Up to 90%
Dimensions	64 x 55 x 13 mm (without antennas)

110 x 58 x 13 mm (with antennas)